

Woodridge at Chestnut Valley



*Log Homes on Beautiful
Chestnut Valley Golf Course*

Woodridge

■ Log homes on the 8th fairway

- 8" Hewn Pine
- Casual living
- Worry free use
- Exterior Lawn and Snow Maintenance covered by the association
- Each Parcel is 100% Owned by you
- Low Association Due's
- Just ENJOY!





Woodridge

■ Relax in the comfortable surroundings

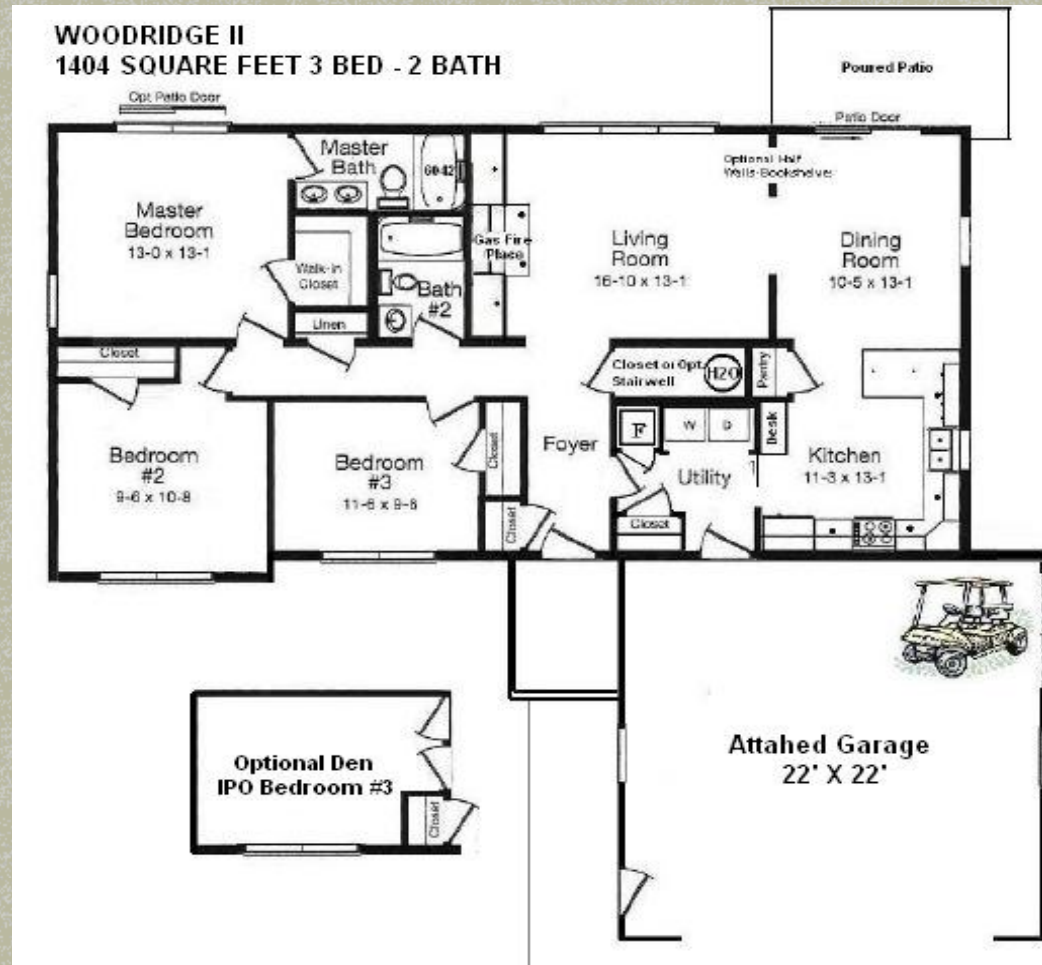
- Leave your stress behind
- Casual living
- Worry free use
- Maintenance covered by association
- Just ENJOY!



Woodridge

■ The Floor Plan

- Up-North living at it's finest
- 8" Hewn Log Exterior
- Three Bedrooms - Two Baths
- Approximately 1404 sq. ft.
- 9' Ceilings
- Floor Coverings
- Kitchen Appliances
- Rear Patio
- Attached Two Car Garage
- Optional O/H Cart Door





Woodridge - Interior

■ Living room with gas fireplace

- Just relax
- Turn on the fireplace on those cool evenings
- Turn on the TV or not
- Relax!





Woodridge

■ Optional wood interiors

- Up-North living at it's finest
- Optional Log & wood interiors





Woodridge - Interior

■ Kitchen – Optional Rustic Modern

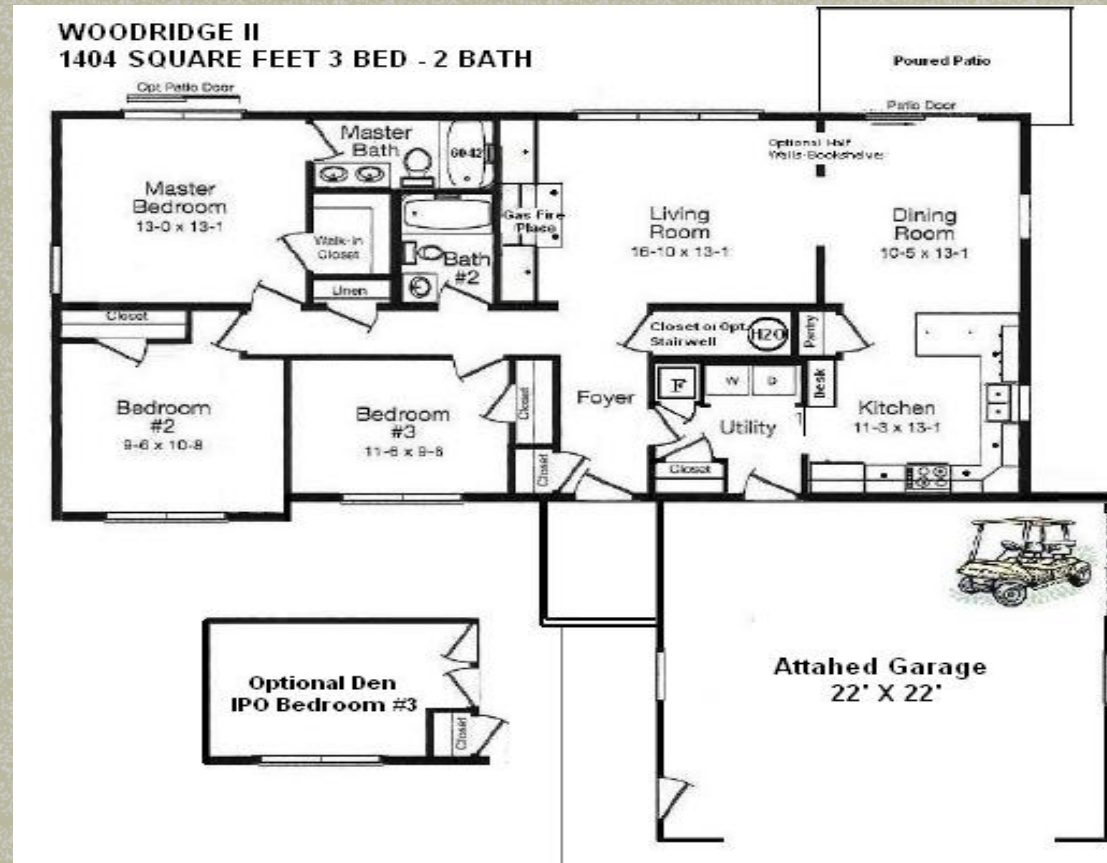
- Modern appliances
- Kitchen open to dining area
- Dine at bar or dining table



Woodridge - Interior

■ Dining - part of the great room

- Dining room is next to kitchen
- All of living area has a view of the golf course





Woodridge - Interior

- Master Bed Room – on the main floor
 - Shown with optional cedar trim
 - Full walk in closet
 - Full bath next to it





Woodridge - Interior

■ Master Bath

- Off Master bedroom
- Large soaker tub w/Shower
- Double sink
- Closet for linens





Woodridge – Interior (lower level)

■ Optional Lower Level Bedroom #4

- Sleeps 4
- Optional Large windows
- Closet






Woodridge – Interior (lower level)

■ Optional Lower Level Finished Family room

- Could Be a Great room for kids to enjoy
- Play area
- Keeps noise out of adult area
- Optional Large Daylight Windows





Woodridge – in Winter

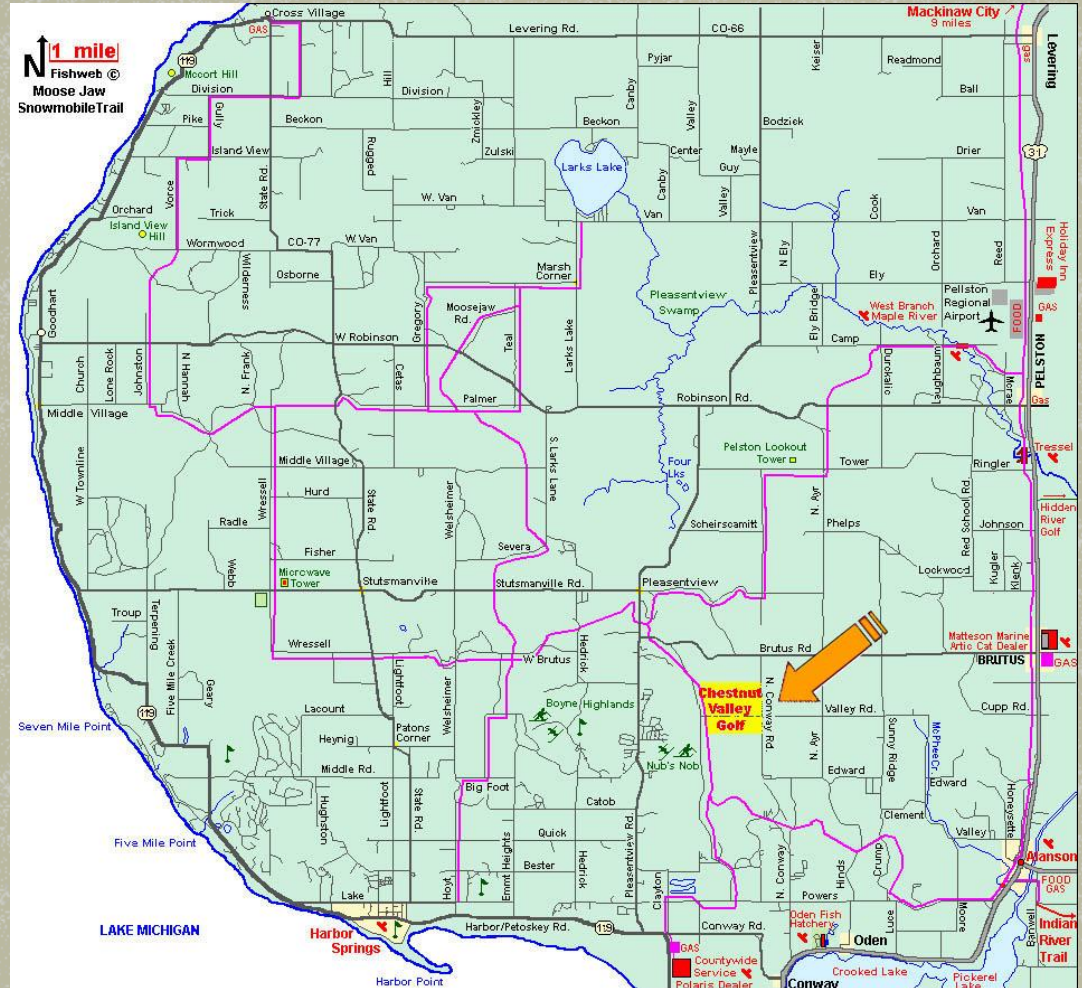
- Winter brings skiing & snowmobiling
 - X-Country ski trails on the golf course
 - Snowmobile trails run next to Chestnut Valley
 - Clubhouse is open all year long



Snowmobiling Emmet County

■ Moose Jaw Trail Map

- Traverses all over Emmet County
- Passes by Chestnut Valley
- Gas & food is available at the clubhouse





Chestnut Valley Golf

■ From the 8th Green

- The development looks on
- Grab your clubs & go





Chestnut Valley Golf

■ The 'Nut' is a fun course!

- 18 hole
- Tree-lined
- Somewhat challenging
- Not boring
- Still fun for novice
- Hole 11 shown here





Chestnut Valley Golf

■ Inside Clubhouse

- Casual drinks & dining
- Great Up-North feel





Chestnut Valley Golf

■ Clubhouse

- Fireplace in dining room
- Warm up to the pleasure of the north!





Chestnut Valley Golf

■ Clubhouse

- Log building to match the environment
- All homes at Chestnut Valley are log or log-sided
- Gives the course a Up-North feel





Chestnut Valley Golf

■ Chestnut tree

- Chestnut Valley was named after this tree
- Next to the 10th hole



Woodridge at Chestnut Valley

■ On Valley Road

- Main road that splits the course
- Easy to get to
- On the 8th fairway





Chestnut Valley Golf

■ Located for convenience

- Located between Harbor Springs & Petoskey
- Close to Boyne Highlands & Nubs Nob
- Close to beaches
- Close to shopping
- Close to boating in many nearby lakes





Chestnut Valley Golf

- The carts are ready!
 - Are you?





FOR MORE INFO:

■ Contact Jack McCloskey

- For more info
- (231) 838-1764 (cell)
- boynecountryhomes@gmail.com
- www.Woodridgeatchestnutvalleygolf.com